

Confederate Soldiers Buried in Wise County Texas

**Daniel C. Paul  
&  
John Slinkard Hale**

War Records, Genealogy,  
Pictures and Documents

11/11/2012

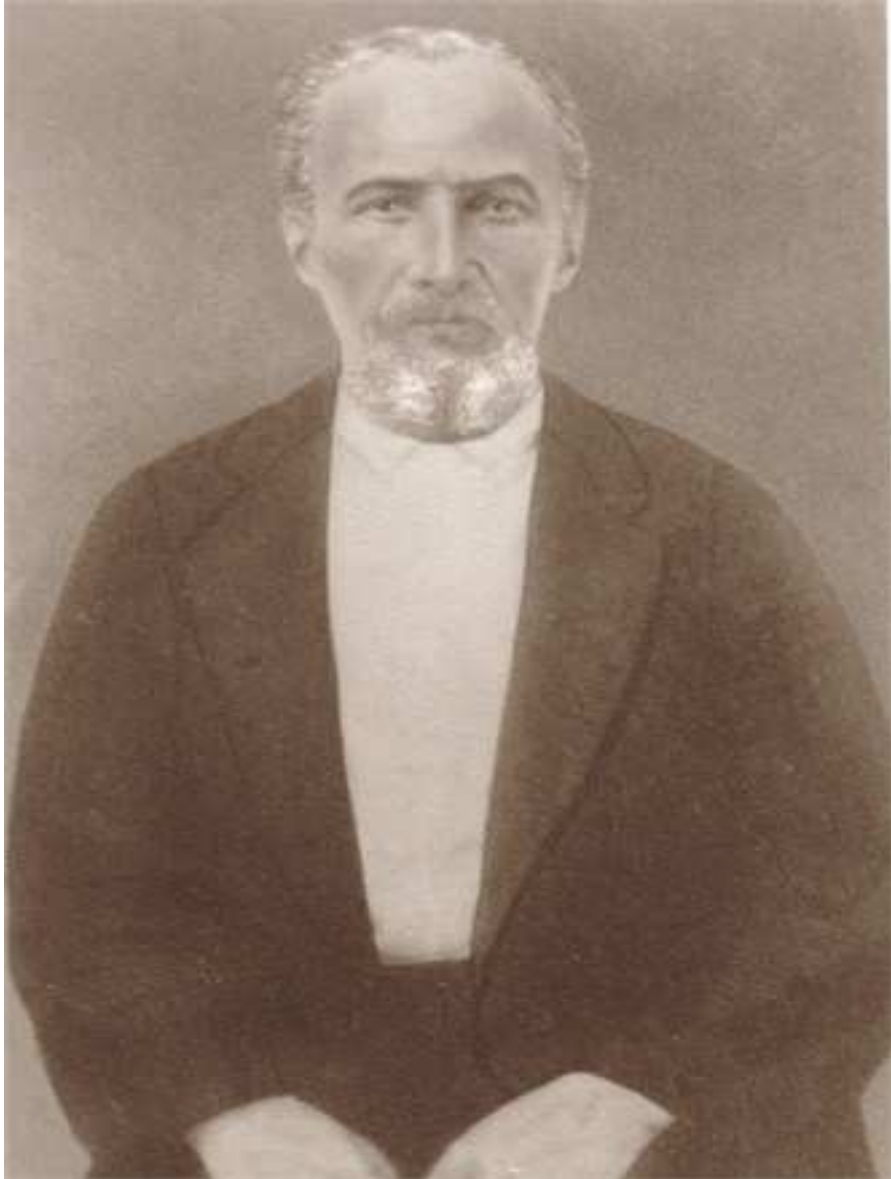
**A 54 Page Paper Sent in by Ted Urbanski  
Researcher for the 8th Tennessee Cavalry Smith's  
Re-enactor as 2nd Lt. Dewitt Anderson Co. K 8th Regt. Tennessee Cav.**

Researched and edited by  
Theodore Urbanski  
Stones River Publishing Inc.®  
233 Willington Hill Rd.  
Willington, Connecticut 06279  
[tedsuedoghouse@charter.net](mailto:tedsuedoghouse@charter.net)

Second Sergeant Daniel C. Paul  
Company F  
Fourth Regiment Tennessee Cavalry (Murray's)  
&  
Company I  
Fourth Regiment Tennessee Cavalry (Smith's)  
Aka  
Eighth Regiment Tennessee Cavalry (Smith's)







Second Sergeant Daniel C. Paul

*Compiled Military Service Record*

*Company F*

*4<sup>th</sup> Regiment Tennessee Cavalry (Murray's)*

519

*Paul, Daniel*  
Co. *F*, **4** (Murray's)  
Tennessee Cavalry.  
(Confederate.)

*Corporal | Sergeant*  
CARD NUMBERS.

1	<i>48284098</i>	20
2	<i>4182</i>	21
3	<i>45757633</i>	22
4	<i>875941</i>	23
5		24
6		25
7		26
8		27
9		28
10		29
11		30
12		31
13		32
14		33
15		34
16		35
17		36
18		37
19		38

Number of medical cards herein *0*  
Number of personal papers herein *0*

BOOK MARK: .....

See also .....

P

(Confederate.)

4 Cav.  
(Murray's.)

Tenn.

Daniel Paul

4 Coptl, Capt. W. S. Bledsoe's Co. of Cav.\*

Age 22 years.

Appears on

Company Muster-in Roll

of the organization named above. Roll dated

Camp Myers Tenn. Oct 1, 1861.

Muster-in to date Aug 10, 1861.

Joined for duty and enrolled:

When August 10, 1861.

Where Camp McGinnis

By whom 1st Lt. A. B. Hardcastle

Period 12 mos

Valuation in dollars of horse 160

Remarks: Present for duty

\*This company subsequently became Company F, 4th (Murray's) Regiment Tennessee Cavalry.

Companies B and F, 5th Battalion Tennessee Cavalry, which were not transferred with the other companies of that battalion to the 2d (Ashby's) Regiment Tennessee Cavalry May 24, 1862, formed the nucleus of an organization that appears to have been known as Spiller's Battalion Tennessee Cavalry. This battalion was increased to a regiment about August, 1862, by the addition of other companies and was known as the 4th Regiment Tennessee Cavalry, Companies B and F, 5th Battalion Tennessee Cavalry becoming Companies I and C, respectively, of this regiment. The regiment appears to have been disbanded about January 23, 1863, and Companies C, F, H and I becoming B, I, C and H, respectively, of the 8th (also called 4th) Regiment Tennessee Cavalry; Companies A and D became Companies D and C, respectively, 1st Regiment Confederate Cavalry, and Companies B, E, G and K became Companies H, K, G and F, respectively, 22d Battalion Tennessee Infantry.

Book mark:

(655)

J. W. Kilnison

Copyist.



(Confederate.)

4 Cav.  
(Murray's.)

Tenn.

*P*  
*12. C. Paul*

*2d Lt*, Co. F, { Murray's Regiment,  
Tennessee Cavalry.\*

Appears on

**Company Muster Roll**

of the organization named above,

for *Apr 14, 1862 to Jun 20, 1862*

Enlisted:

When *Aug 10* 186*1*.

Where *Camp McKinno Tenn*

By whom *Major Fulkerson*

Period *12 months*

Last paid:

By whom *Major Jackson*

To what time *Apr 30*, 186*2*.

Bounty due, \$ *50*<sup>100</sup>

Present or absent *Absent*

Remarks *Captured 8 Oct 1862*  
*(over)*

Companies B and F, 5th Battalion Tennessee Cavalry, which were not transferred with the other companies of that battalion to the 2d (Ashby's) Regiment Tennessee Cavalry May 24, 1862, formed the nucleus of an organization that appears to have been known as Spiller's Battalion Tennessee Cavalry. This battalion was increased to a regiment about August, 1862, by the addition of other companies and was known as the 4th Regiment Tennessee Cavalry, Companies B and F, 5th Battalion Tennessee Cavalry becoming Companies I and C, respectively, of this regiment. The regiment appears to have been disbanded about January 23, 1863, and Companies C, F, H and I becoming B, I, C and H, respectively, of the 8th (also called 4th) Regiment Tennessee Cavalry; Companies A and D became Companies D and C, respectively, 1st Regiment Confederate Cavalry, and Companies B, E, G and K became Companies H, K, G and F, respectively, 22d Battalion Tennessee Infantry.

Book mark :

(642)

*J. W. Wilkinson*

Copyist.

CON-2.

48284182

1908.

*at Perryville Ky*

(Confederate.)

P | <sup>8 months</sup> 3<sup>rd</sup> Cav. | Tenn

D. C. Paul

3<sup>rd</sup> Regt. Tenn. Cav.

Appears on a

**List**

of prisoners paroled by Capt. Jos. P. Black, Provost Marshal, Harrodsburg, Ky., between December 28, 1862 and January 9, 1863.

Remarks:

13 Army Corps, Reg. No. 19, part 37, page 10

(639b)

J. C. Bay

Copyist.

(Confederate.)

*P* *Murray's Co.*

*Daniel C. Paul*  
*Sgt. 1st Regt. 1st Co. Murray's Co.*

Appears on a Register of

**Prisoners of War.**

Where taken *Carrsville, Ky.*

When *Oct 9*, 1862.

Remarks: *Sent to Camp Butler,*  
*Ill., Mar. 11, 1863.*

Louisville, Ky., Register No. 1; page *193*

(439)

*W. H. Coelings*

Copyist.



(Confederate.)

P. | Myers' Regt Tenn

D. L. Paul

Private Co. F. Myers' Regt. Tenn. Army

Appears on a

**Roll of Prisoners of War**

at Camp Butler, Ill., received from Louisville,  
Ky., March 14, 1863.

Roll dated *Not dated*  
....., 186 .

Where captured *Memphis, Tenn*

When captured *Jan 5<sup>th</sup>, 1863.*

Remarks: .....

Number of roll:

1

(639b)

*H. J. Harris*

Copyist.

(Confederate.)

P | Mungo Car | Inn  
+  
Dan L Paul  
Perth, Blidsoes Co. Mungo Inn Car

Appears on a

**Roll of Prisoners of War**

sent from Military Prison, Louisville, Ky., to  
Camp Butler, Ill., March 11, 1863.

Roll dated

Not dated, 186

Where captured

Penyville Ky

When captured

Dec 9, 1862

Remarks:

Number of roll:

218; sheet 6

(639b)

W. A. D. D.

Copyist.

*Agave americana* var. *centrifolia* All. pursh.

Went to Camp Butler. Illinois, March 11<sup>th</sup> 1813.

during the present war, unless sooner arranged.

Sept 4 Grant Butler, Illinois, March 17<sup>th</sup> 1808.

(Confederate.)

P | Myers Gen Tenn.

D. C. Paul +

M. C. F. Myers Tenn Gen.

Name appears on a

**Parole\***

which is as follows: "We, the Undersigned prisoners of War, do give our parole of honor, that we will not take up arms, or do any hostile act against the United States until regularly exchanged."

Parole dated Not dated

Where captured Murfreesboro, Tenn.

When captured Jan 5, 1863

Received at Camp Butler, Ill., from Louisville, Ky., March 14, 1863.

Remarks:

Signature by Mail

\*This parole bears the following indorsement: "City Point, Va., April 17th, 1863. Rec'd this 17th day of April from Capt. R. W. Healy, Co. A. 58th Ill. (508) five hundred and Eight Confederate prisoners of War, and (15) fifteen Citizens, the fifteen citizens claimed the privilege [of] citizens and are receipted for as such. J. H. THOMPSON, Capt. Comdg. at City Point."

Roll 13; sheet 18

Camp Butler, Ill.

(639b)

A. Mudd

Copyist.



520  
*Paul. H. G.*

Co. *F*, **4** (Murray's)  
**Tennessee Cavalry.**

(**Confederate.**)

*Corporal | Sergeant*

REFERENCE SLIP.

*Cards filed with*

*Paul Daniel*

*Transcription of Compiled Military Record*

*Company F*

*4<sup>th</sup> Regiment Tennessee Cavalry Murray's*

Paul, Daniel, File Card No. 519, name appears on Regimental Muster Roll for Company F,  
4 Murray's Tennessee Cavalry

Confederate

Rank-Corporal/Sergeant

4<sup>th</sup> Corporal Daniel Paul Captain W. S. Bledsoe's Company of Cavalry

Age-22 years

Name appears on a Company Muster in Roll of the organization named above for

Camp Meyers, Tennessee---October 1, 1861

Muster --into date August 10, 1861

Joined for duty and enrolled:

When-August 10, 1861

Where- Camp McGinnis

By whom-1<sup>st</sup> Lt. A. B. Hardcastle

Period-12 months

Valuation of horse-\$160.00

Remarks:

Present for duty

Book mark:

\*This company subsequently became Company F, 4 Murray's Regiment Tennessee Cavalry

2<sup>nd</sup> Sergeant D. C. Paul, Company F, Murray's Regiment Tennessee Cavalry

Name appears on Company Muster Roll of the organization named above for April 14,  
1862 to June 23, 1863

Enlisted:

When-August 10, 1861

Where-Camp McGinnis

By whom-Major Fulkerson

Period- 12 months

Last paid:

By whom-Major Jackson

To what time-April 30, 1862

Bounty due-\$50.00

Present or absent- Absent

Captured October 9, 1862 (over to next page) at Perryville, Kentucky

Sergeant Daniel Paul Bledsoe's Company Murray's Cavalry

Name appears on a Register of Prisoners of War

Taken-Perryville, Kentucky

When-October 8, 1862

Remarks:

Sent to Camp Butler, Illinois March 11, 1863

Louisville, Kentucky Register No. 1; page 193





When captured-January 5, 1863

Remarks

Book mark:

Number of Roll 1

Private D. C. Paul, Company F, Myers, Tennessee Cavalry

Name appears on a Parole\* which is as follows: "We the Undersigned prisoners of War, do hereby give our parole of honor, that we will not take up arms or do any hostile act against the United States until regularly exchanged."

Paroled not dated

Where captured-Murfreesboro, Tennessee

When captured-January 5, 1863

Received at Camp Butler, Illinois from Louisville, Kentucky March 14, 1863

Remarks:

\*This parole bears the following indorsement; City Point, Virginia April 17, 1863. Received on this 17<sup>th</sup> day of April from Captain R. W. Bealy Company A, 50<sup>th</sup> Illinois (508) five hundred and eight Confederate Prisoners of War, and (15) fifteen Civilians, the fifteen Civilians claimed the privilege (of) civilians and are receipted for as such. J. H. Thompson, Captain Commanding at City Point, Virginia."

Roll No. 13 sheet 18

Private D. C. Paul 3<sup>rd</sup> Regiment Tennessee Cavalry

Name appears on a List of prisoners paroled by Captain Joseph P. Black Provost Marshal, Harrodsburg, Kentucky between December 28, 1862 and January 9, 1863

Remarks:

13 Army Corps, Register No. 19, part 37, page 10

Paul. D. C. File Card No. 520 name appears on Regimental Muster Roll for Company F, 4  
Murray's Tennessee Cavalry

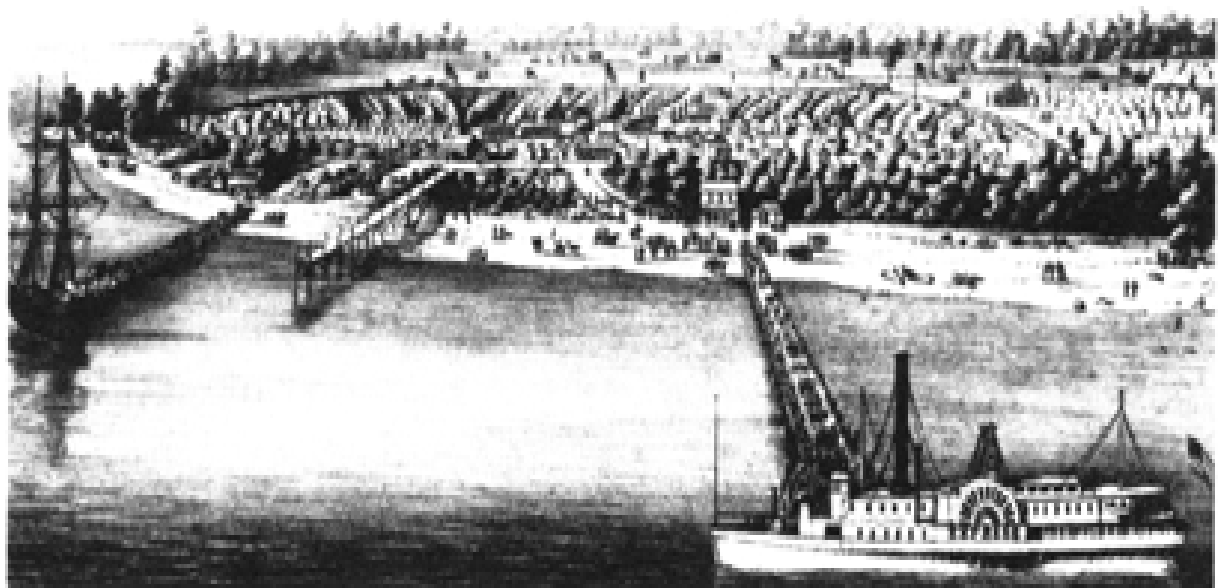
Confederate

Rank-Corporal/Sergeant

Reference slip-card filed under Paul, Daniel

End of file

*Camp Butler Illinois*



*Compiled Military Service Record*

*Company I*

*Eighth Regiment Tennessee Cavalry (Smith's)*

*AKA*

*Fourth Regiment Tennessee Cavalry (Smith's)*

*Transcription of Compiled Military Service Record*

*Company I*

*Eighth Regiment Tennessee Cavalry*

*Aka*

*Fourth Regiment Tennessee Cavalry*

Pall, Daniel C. File Card No. 1194 Company I, 8 (Smith's) Tennessee Cavalry Confederate name appears on reference slip card filed with Paul, D. C.

Rank-Private/Sergeant

Paul, D. C. File Card No. 1220 name appears on a Regimental Muster Roll for Company 1, 8 (Smith's) Tennessee Cavalry Confederate

Rank-Private/Sergeant

Private D. C. Paul, Company 1, 4<sup>th</sup> Regiment Tennessee Cavalry

Name appears on Company Muster Roll of the organization named above for May 28, 1863

Enlisted:

When-August 10, 1861

Where- Camp McGinnis

By whom-Major Fulkerson

Period- 12 months

Last paid:

By whom- Major Jackson

To what time-April 30, 1863

Present or absent-Absent

Remarks:

Re-enlisted May 26, wounded at Perryville, Kentucky and taken prisoner

Book mark:

Private Daniel C. Paul Company 1, 4<sup>th</sup> Regiment Tennessee Cavalry

Name appears on a Roll of Prisoners of War at Nashville, Tennessee captured under Major General Thomas, Commanding Department of the Cumberland, and forwarded to Captain S. E. Jones Add'l A. D. C., Louisville, Kentucky September 13, 1864.

Roll dated Headquarters Department of the Cumberland Office Provost Marshal General, Nashville, Tennessee

Where captured-Near Woodbury, Tennessee

When captured-September 6, 1864

Remarks:

Headquarters Provost Marshal General, Department of the Cumberland, Nashville,  
Tennessee; Roll No. 346 sheet 4

Private Daniel C. Paul Company 1, 4<sup>th</sup> Regiment Tennessee Cavalry

Name appears on a Roll of Prisoners of War received at Louisville, Kentucky during the  
five days ending September 16, 1864

Where captured-Near Woodbury, Tennessee

When captured-September 6, 1864

Where from-Nashville, Tennessee

Remarks:

Number of Roll 163; sheet 5

284

NO.	NAME	RANK	REGIMENT, OR COMPANY AND STATE	CO.	WHERE CAPTURED	WHEN CAPTURED
1105	Blanch	John B.	Private	4	1st Cav	La. Lynchburg Ky June 12, 1864
6	Borke	Abijah	"	1	"	B. Mobile Ala " " "
7	Briggs	Joseph	"	29	1st Infy	La. New Orleans Va Aug 3, "
8	Bull	Geo M.	Railroad Employee	"	"	" " " " " " July 26, "
9	Burke	Joseph	Private	13th	Co. 1st	La. from Dept Cumberland Aug 10, "
1110	Burke	Sanford	Private	5th	Ky Cav	E. Grant Ky " 15, "
1	Burke	Conrad	"	40	Co. 1st	La. near Atlanta Ga " 13, "
2	Burke	Geo. M.	"	1	"	" " " " " " " " "
3	Burke	Mark	"	1	La	" " " " " " " " "
4	Burke	Joseph P.	"	34	Miss	" " " " " " " " "
5	Burke	W. R.	"	13	1st Cav	B. Reservoir " " 24, "
6	Burke	Parkes H.	Capt	24	Ala	E. near Atlanta " " 13, "
7	Burke	Chas. P.	Private	"	"	" " " " " " " " "
8	Burke	Joseph P.	"	7	"	K. " " " " " " " " "
9	Burke	Geo. M.	Capt	43	Co. 1st	La. " " " " " " " " "
1120	Burke	Abijah	Private	2	Ala	Car " " " " " " " " "
1	Burke	Samuel A.	King	9	1st Cav	E. " " " " " " " " "
2	Burke	Geo. M.	Capt	43	Co. 1st	La. " " " " " " " " "
3	Burke	Rich. H.	"	9	1st Cav	E. " " " " " " " " "
4	Burke	Geo. M.	"	3	1st Cav	H. " " " " " " " " "
5	Burke	W. H.	"	3	Ky	A. " " " " " " " " "
6	Burke	Wm.	"	51	Ala	B. " " " " " " " " "
7	Burke	Wm.	Capt	"	"	E. " " " " " " " " "
8	Burke	Geo. M.	Capt	8	1st Cav	E. " " " " " " " " "
9	Burke	Geo. M.	Capt	23	Miss	La. " " " " " " " " "
1130	Burke	Geo. M.	Capt	1	1st Cav	A. " " " " " " " " "
1	Burke	Geo. M.	Capt	9	1st Cav	C. " " " " " " " " "
2	Burke	Geo. M.	Capt	2	Ky	C. " " " " " " " " "
3	Burke	Geo. M.	Capt	3	"	D. " " " " " " " " "
4	Burke	Geo. M.	Capt	2	"	A. " " " " " " " " "
5	Burke	Geo. M.	Capt	8	1st Cav	E. " " " " " " " " "
6	Burke	Geo. M.	Capt	23	Miss	La. " " " " " " " " "
7	Burke	Geo. M.	Capt	1	1st Cav	A. " " " " " " " " "
8	Burke	Geo. M.	Capt	9	1st Cav	C. " " " " " " " " "
9	Burke	Geo. M.	Capt	2	Ky	C. " " " " " " " " "
1140	Burke	Geo. M.	Capt	3	"	D. " " " " " " " " "
1	Burke	Geo. M.	Capt	2	"	A. " " " " " " " " "
2	Burke	Geo. M.	Capt	8	1st Cav	E. " " " " " " " " "
3	Burke	Geo. M.	Capt	23	Miss	La. " " " " " " " " "
4	Burke	Geo. M.	Capt	1	1st Cav	A. " " " " " " " " "
5	Burke	Geo. M.	Capt	9	1st Cav	C. " " " " " " " " "
6	Burke	Geo. M.	Capt	2	Ky	C. " " " " " " " " "
7	Burke	Geo. M.	Capt	3	"	D. " " " " " " " " "
8	Burke	Geo. M.	Capt	2	"	A. " " " " " " " " "
9	Burke	Geo. M.	Capt	8	1st Cav	E. " " " " " " " " "
1150	Burke	Geo. M.	Capt	23	Miss	La. " " " " " " " " "
1	Burke	Geo. M.	Capt	1	1st Cav	A. " " " " " " " " "
2	Burke	Geo. M.	Capt	9	1st Cav	C. " " " " " " " " "
3	Burke	Geo. M.	Capt	2	Ky	C. " " " " " " " " "
4	Burke	Geo. M.	Capt	3	"	D. " " " " " " " " "
5	Burke	Geo. M.	Capt	2	"	A. " " " " " " " " "
6	Burke	Geo. M.	Capt	8	1st Cav	E. " " " " " " " " "
7	Burke	Geo. M.	Capt	23	Miss	La. " " " " " " " " "
8	Burke	Geo. M.	Capt	1	1st Cav	A. " " " " " " " " "
9	Burke	Geo. M.	Capt	9	1st Cav	C. " " " " " " " " "
1160	Burke	Geo. M.	Capt	2	Ky	C. " " " " " " " " "
1	Burke	Geo. M.	Capt	3	"	D. " " " " " " " " "
2	Burke	Geo. M.	Capt	2	"	A. " " " " " " " " "
3	Burke	Geo. M.	Capt	8	1st Cav	E. " " " " " " " " "
4	Burke	Geo. M.	Capt	23	Miss	La. " " " " " " " " "
5	Burke	Geo. M.	Capt	1	1st Cav	A. " " " " " " " " "
6	Burke	Geo. M.	Capt	9	1st Cav	C. " " " " " " " " "
7	Burke	Geo. M.	Capt	2	Ky	C. " " " " " " " " "
8	Burke	Geo. M.	Capt	3	"	D. " " " " " " " " "
9	Burke	Geo. M.	Capt	2	"	A. " " " " " " " " "
1170	Burke	Geo. M.	Capt	8	1st Cav	E. " " " " " " " " "
1	Burke	Geo. M.	Capt	23	Miss	La. " " " " " " " " "
2	Burke	Geo. M.	Capt	1	1st Cav	A. " " " " " " " " "
3	Burke	Geo. M.	Capt	9	1st Cav	C. " " " " " " " " "
4	Burke	Geo. M.	Capt	2	Ky	C. " " " " " " " " "
5	Burke	Geo. M.	Capt	3	"	D. " " " " " " " " "
6	Burke	Geo. M.	Capt	2	"	A. " " " " " " " " "
7	Burke	Geo. M.	Capt	8	1st Cav	E. " " " " " " " " "
8	Burke	Geo. M.	Capt	23	Miss	La. " " " " " " " " "
9	Burke	Geo. M.	Capt	1	1st Cav	A. " " " " " " " " "
1180	Burke	Geo. M.	Capt	9	1st Cav	C. " " " " " " " " "
1	Burke	Geo. M.	Capt	2	Ky	C. " " " " " " " " "
2	Burke	Geo. M.	Capt	3	"	D. " " " " " " " " "
3	Burke	Geo. M.	Capt	2	"	A. " " " " " " " " "
4	Burke	Geo. M.	Capt	8	1st Cav	E. " " " " " " " " "
5	Burke	Geo. M.	Capt	23	Miss	La. " " " " " " " " "
6	Burke	Geo. M.	Capt	1	1st Cav	A. " " " " " " " " "
7	Burke	Geo. M.	Capt	9	1st Cav	C. " " " " " " " " "
8	Burke	Geo. M.	Capt	2	Ky	C. " " " " " " " " "
9	Burke	Geo. M.	Capt	3	"	D. " " " " " " " " "
1190	Burke	Geo. M.	Capt	2	"	A. " " " " " " " " "
1	Burke	Geo. M.	Capt	8	1st Cav	E. " " " " " " " " "
2	Burke	Geo. M.	Capt	23	Miss	La. " " " " " " " " "
3	Burke	Geo. M.	Capt	1	1st Cav	A. " " " " " " " " "
4	Burke	Geo. M.	Capt	9	1st Cav	C. " " " " " " " " "
5	Burke	Geo. M.	Capt	2	Ky	C. " " " " " " " " "
6	Burke	Geo. M.	Capt	3	"	D. " " " " " " " " "
7	Burke	Geo. M.	Capt	2	"	A. " " " " " " " " "
8	Burke	Geo. M.	Capt	8	1st Cav	E. " " " " " " " " "
9	Burke	Geo. M.	Capt	23	Miss	La. " " " " " " " " "
1200	Burke	Geo. M.	Capt	1	1st Cav	A. " " " " " " " " "
1	Burke	Geo. M.	Capt	9	1st Cav	C. " " " " " " " " "
2	Burke	Geo. M.	Capt	2	Ky	C. " " " " " " " " "
3	Burke	Geo. M.	Capt	3	"	D. " " " " " " " " "
4	Burke	Geo. M.	Capt	2	"	A. " " " " " " " " "
5	Burke	Geo. M.	Capt	8	1st Cav	E. " " " " " " " " "
6	Burke	Geo. M.	Capt	23	Miss	La. " " " " " " " " "
7	Burke	Geo. M.	Capt	1	1st Cav	A. " " " " " " " " "
8	Burke	Geo. M.	Capt	9	1st Cav	C. " " " " " " " " "
9	Burke	Geo. M.	Capt	2	Ky	C. " " " " " " " " "
1210	Burke	Geo. M.	Capt	3	"	D. " " " " " " " " "
1	Burke	Geo. M.	Capt	2	"	A. " " " " " " " " "
2	Burke	Geo. M.	Capt	8	1st Cav	E. " " " " " " " " "
3	Burke	Geo. M.	Capt	23	Miss	La. " " " " " " " " "
4	Burke	Geo. M.	Capt	1	1st Cav	A. " " " " " " " " "
5	Burke	Geo. M.	Capt	9	1st Cav	C. " " " " " " " " "
6	Burke	Geo. M.	Capt	2	Ky	C. " " " " " " " " "
7	Burke	Geo. M.	Capt	3	"	D. " " " " " " " " "
8	Burke	Geo. M.	Capt	2	"	A. " " " " " " " " "
9	Burke	Geo. M.	Capt	8	1st Cav	E. " " " " " " " " "
1220	Burke	Geo. M.	Capt	23	Miss	La. " " " " " " " " "
1	Burke	Geo. M.	Capt	1	1st Cav	A. " " " " " " " " "
2	Burke	Geo. M.	Capt	9	1st Cav	C. " " " " " " " " "
3	Burke	Geo. M.	Capt	2	Ky	C. " " " " " " " " "
4	Burke	Geo. M.	Capt	3	"	D. " " " " " " " " "
5	Burke	Geo. M.	Capt	2	"	A. " " " " " " " " "
6	Burke	Geo. M.	Capt	8	1st Cav	E. " " " " " " " " "
7	Burke	Geo. M.	Capt	23	Miss	La. " " " " " " " " "
8	Burke	Geo. M.	Capt	1	1st Cav	A. " " " " " " " " "
9	Burke	Geo. M.	Capt	9	1st Cav	C. " " " " " " " " "
1230	Burke	Geo. M.	Capt	2	Ky	C. " " " " " " " " "
1	Burke	Geo. M.	Capt	3	"	D. " " " " " " " " "
2	Burke	Geo. M.	Capt	2	"	A. " " " " " " " " "
3	Burke	Geo. M.	Capt	8	1st Cav	E. " " " " " " " " "
4	Burke	Geo. M.	Capt	23	Miss	La. " " " " " " " " "
5	Burke	Geo. M.	Capt	1	1st Cav	A. " " " " " " " " "
6	Burke	Geo. M.	Capt	9	1st Cav	C. " " " " " " " " "
7	Burke	Geo. M.	Capt	2	Ky	C. " " " " " " " " "
8	Burke	Geo. M.	Capt	3	"	D. " " " " " " " " "
9	Burke	Geo. M.	Capt	2	"	A. " " " " " " " " "
1240	Burke	Geo. M.	Capt	8	1st Cav	E. " " " " " " " " "
1	Burke	Geo. M.	Capt	23	Miss	La. " " " " " " " " "
2	Burke	Geo. M.	Capt	1	1st Cav	A. " " " " " " " " "
3	Burke	Geo. M.	Capt	9	1st Cav	C. " " " " " " " " "
4	Burke	Geo. M.	Capt	2	Ky	C. " " " " " " " " "
5	Burke	Geo. M.	Capt	3	"	D. " " " " " " " " "
6	Burke	Geo. M.	Capt	2	"	A. " " " " " " " " "
7	Burke	Geo. M.	Capt	8	1st Cav	E. " " " " " " " " "
8	Burke	Geo. M.	Capt	23	Miss	La. " " " " " " " " "
9	Burke	Geo. M.	Capt	1	1st Cav	A. " " " " " " " " "
1250	Burke	Geo. M.	Capt	9	1st Cav	C. " " " " " " " " "
1	Burke	Geo. M.	Capt	2	Ky	C. " " " " " " " " "
2	Burke	Geo. M.	Capt	3	"	D. " " " " " " " " "
3	Burke	Geo. M.	Capt	2	"	A. " " " " " " " " "
4	Burke	Geo. M.	Capt	8	1st Cav	E. " " " " " " " " "
5	Burke	Geo. M.	Capt	23	Miss	La. " " " " " " " " "
6	Burke	Geo. M.	Capt	1	1st Cav	A. " " " " " " " " "
7	Burke	Geo. M.	Capt	9	1st Cav	C. " " " " " " " " "
8	Burke	Geo. M.	Capt	2	Ky	C. " " " " " " " " "
9	Burke	Geo. M.	Capt	3	"	D. " " " " " " " " "
1260	Burke	Geo. M.	Capt	2	"	A. " " " " " " " " "
1	Burke	Geo. M.	Capt	8	1st Cav	E. " " " " " " " " "
2	Burke	Geo. M.	Capt	23	Miss	La. " " " " " " " " "
3	Burke	Geo. M.	Capt	1	1st Cav	A. " " " " " " " " "
4	Burke	Geo. M.	Capt	9	1st Cav	C. " " " " " " " " "
5	Burke	Geo. M.	Capt	2	Ky	C. " " " " " " " " "
6	Burke	Geo. M.	Capt	3	"	D. " " " " " " " " "
7	Burke	Geo. M.	Capt	2	"	A. " " " " " " " " "
8	Burke	Geo. M.	Capt	8	1st Cav	E. " " " " " " " " "
9	Burke	Geo. M.	Capt	23	Miss	La. " " " " " " " " "
1270	Burke	Geo. M.	Capt	1	1st Cav	A. " " " " " " " " "
1	Burke	Geo. M.	Capt	9	1st Cav	C. " " " " " " " " "
2	Burke	Geo. M.	Capt	2	Ky	C. " " " " " " " " "
3	Burke	Geo. M.	Capt	3	"	D. " " " " " " " " "
4	Burke	Geo. M.	Capt	2	"	A. " " " " " " " " "
5	Burke	Geo. M.	Capt	8	1st Cav	E. " " " " " " " " "
6	Burke	Geo. M.	Capt	23	Miss	La. " " " " " " " " "
7	Burke	Geo. M.	Capt	1	1st Cav	A. " " " " " " " " "
8	Burke	Geo. M.	Capt	9	1st Cav	C. " " " " " " " " "
9	Burke	Geo. M.	Capt	2	Ky	C. " " " " " " " " "
1280	Burke	Geo. M.	Capt	3	"	D. " " " " " " " " "
1	Burke	Geo. M.	Capt	2	"	A. " " " " " " " " "
2	Burke	Geo. M.	Capt	8	1st Cav	E. " " " " " " " " "
3	Burke	Geo. M.	Capt	23	Miss	La. " " " " " " " " "
4	Burke	Geo. M.	Capt	1	1st Cav	A. " " " " " " " " "
5	Burke	Geo. M.	Capt	9	1st Cav	C. " " " " " " " " "
6	Burke	Geo. M.	Capt	2	Ky	C. " " " " " " " " "
7	Burke	Geo. M.	Capt	3	"	D. " " " " " " " " "
8	Burke	Geo. M.	Capt	2	"	A. " " " " " " " " "
9	Burke	Geo. M.	Capt	8	1st Cav	E. " " " " " " " " "
1290	Burke	Geo. M.	Capt	23	Miss	La. " " " " " " " " "
1	Burke	Geo. M.	Capt	1	1st Cav	A. " " " " " " " " "
2	Burke	Geo. M.	Capt	9	1st Cav	C. " " " " " " " " "
3	Burke	Geo. M.	Capt	2	Ky	



Private Daniel C. Paul, Company I, 4<sup>th</sup> Regiment Tennessee Cavalry

Name appears on a Register of Prisoners of War received at Military Prison, Louisville, Kentucky

Where captured-Near Woodbury, Tennessee

When captured-September 6, 1864

Discharged:

## Terms-Camp Chase

When-September 15, 1864

Remarks:

Louisville, Kentucky, Register No. 3; page 306

306

Register of Prisoners of War received at Military Prison, Louisville, Ky.

No.	NAME	RANK	CO.	REMARKS	DISEASED		REMARKS
					Time	Place	
1	John H. Smith	Private	A	1st Regt. Cal.	Sept. 1864	Cholera	Sept. 1864
2	James H. Smith	Private	B	1st Regt. Cal.	Sept. 1864	Cholera	Sept. 1864
3	William H. Smith	Private	C	1st Regt. Cal.	Sept. 1864	Cholera	Sept. 1864
4	George H. Smith	Private	D	1st Regt. Cal.	Sept. 1864	Cholera	Sept. 1864
5	Thomas H. Smith	Private	E	1st Regt. Cal.	Sept. 1864	Cholera	Sept. 1864
6	Charles H. Smith	Private	F	1st Regt. Cal.	Sept. 1864	Cholera	Sept. 1864
7	Edward H. Smith	Private	G	1st Regt. Cal.	Sept. 1864	Cholera	Sept. 1864
8	Frederick H. Smith	Private	H	1st Regt. Cal.	Sept. 1864	Cholera	Sept. 1864
9	Robert H. Smith	Private	I	1st Regt. Cal.	Sept. 1864	Cholera	Sept. 1864
10	Henry H. Smith	Private	J	1st Regt. Cal.	Sept. 1864	Cholera	Sept. 1864
11	John H. Smith	Private	K	1st Regt. Cal.	Sept. 1864	Cholera	Sept. 1864
12	James H. Smith	Private	L	1st Regt. Cal.	Sept. 1864	Cholera	Sept. 1864
13	William H. Smith	Private	M	1st Regt. Cal.	Sept. 1864	Cholera	Sept. 1864
14	George H. Smith	Private	N	1st Regt. Cal.	Sept. 1864	Cholera	Sept. 1864
15	Thomas H. Smith	Private	O	1st Regt. Cal.	Sept. 1864	Cholera	Sept. 1864
16	Charles H. Smith	Private	P	1st Regt. Cal.	Sept. 1864	Cholera	Sept. 1864
17	Edward H. Smith	Private	Q	1st Regt. Cal.	Sept. 1864	Cholera	Sept. 1864
18	Frederick H. Smith	Private	R	1st Regt. Cal.	Sept. 1864	Cholera	Sept. 1864
19	Robert H. Smith	Private	S	1st Regt. Cal.	Sept. 1864	Cholera	Sept. 1864
20	Henry H. Smith	Private	T	1st Regt. Cal.	Sept. 1864	Cholera	Sept. 1864
21	John H. Smith	Private	U	1st Regt. Cal.	Sept. 1864	Cholera	Sept. 1864
22	James H. Smith	Private	V	1st Regt. Cal.	Sept. 1864	Cholera	Sept. 1864
23	William H. Smith	Private	W	1st Regt. Cal.	Sept. 1864	Cholera	Sept. 1864
24	George H. Smith	Private	X	1st Regt. Cal.	Sept. 1864	Cholera	Sept. 1864
25	Thomas H. Smith	Private	Y	1st Regt. Cal.	Sept. 1864	Cholera	Sept. 1864
26	Charles H. Smith	Private	Z	1st Regt. Cal.	Sept. 1864	Cholera	Sept. 1864
27	Edward H. Smith	Private	A	1st Regt. Cal.	Sept. 1864	Cholera	Sept. 1864
28	Frederick H. Smith	Private	B	1st Regt. Cal.	Sept. 1864	Cholera	Sept. 1864
29	Robert H. Smith	Private	C	1st Regt. Cal.	Sept. 1864	Cholera	Sept. 1864
30	Henry H. Smith	Private	D	1st Regt. Cal.	Sept. 1864	Cholera	Sept. 1864
31	John H. Smith	Private	E	1st Regt. Cal.	Sept. 1864	Cholera	Sept. 1864
32	James H. Smith	Private	F	1st Regt. Cal.	Sept. 1864	Cholera	Sept. 1864
33	William H. Smith	Private	G	1st Regt. Cal.	Sept. 1864	Cholera	Sept. 1864
34	George H. Smith	Private	H	1st Regt. Cal.	Sept. 1864	Cholera	Sept. 1864
35	Thomas H. Smith	Private	I	1st Regt. Cal.	Sept. 1864	Cholera	Sept. 1864
36	Charles H. Smith	Private	J	1st Regt. Cal.	Sept. 1864	Cholera	Sept. 1864
37	Edward H. Smith	Private	K	1st Regt. Cal.	Sept. 1864	Cholera	Sept. 1864
38	Frederick H. Smith	Private	L	1st Regt. Cal.	Sept. 1864	Cholera	Sept. 1864
39	Robert H. Smith	Private	M	1st Regt. Cal.	Sept. 1864	Cholera	Sept. 1864
40	Henry H. Smith	Private	N	1st Regt. Cal.	Sept. 1864	Cholera	Sept. 1864
41	John H. Smith	Private	O	1st Regt. Cal.	Sept. 1864	Cholera	Sept. 1864
42	James H. Smith	Private	P	1st Regt. Cal.	Sept. 1864	Cholera	Sept. 1864
43	William H. Smith	Private	Q	1st Regt. Cal.	Sept. 1864	Cholera	Sept. 1864
44	George H. Smith	Private	R	1st Regt. Cal.	Sept. 1864	Cholera	Sept. 1864
45	Thomas H. Smith	Private	S	1st Regt. Cal.	Sept. 1864	Cholera	Sept. 1864
46	Charles H. Smith	Private	T	1st Regt. Cal.	Sept. 1864	Cholera	Sept. 1864
47	Edward H. Smith	Private	U	1st Regt. Cal.	Sept. 1864	Cholera	Sept. 1864
48	Frederick H. Smith	Private	V	1st Regt. Cal.	Sept. 1864	Cholera	Sept. 1864
49	Robert H. Smith	Private	W	1st Regt. Cal.	Sept. 1864	Cholera	Sept. 1864
50	Henry H. Smith	Private	X	1st Regt. Cal.	Sept. 1864	Cholera	Sept. 1864
51	John H. Smith	Private	Y	1st Regt. Cal.	Sept. 1864	Cholera	Sept. 1864
52	James H. Smith	Private	Z	1st Regt. Cal.	Sept. 1864	Cholera	Sept. 1864
53	William H. Smith	Private	A	1st Regt. Cal.	Sept. 1864	Cholera	Sept. 1864
54	George H. Smith	Private	B	1st Regt. Cal.	Sept. 1864	Cholera	Sept. 1864
55	Thomas H. Smith	Private	C	1st Regt. Cal.	Sept. 1864	Cholera	Sept. 1864
56	Charles H. Smith	Private	D	1st Regt. Cal.	Sept. 1864	Cholera	Sept. 1864
57	Edward H. Smith	Private	E	1st Regt. Cal.	Sept. 1864	Cholera	Sept. 1864
58	Frederick H. Smith	Private	F	1st Regt. Cal.	Sept. 1864	Cholera	Sept. 1864
59	Robert H. Smith	Private	G	1st Regt. Cal.	Sept. 1864	Cholera	Sept. 1864
60	Henry H. Smith	Private	H	1st Regt. Cal.	Sept. 1864	Cholera	Sept. 1864
61	John H. Smith	Private	I	1st Regt. Cal.	Sept. 1864	Cholera	Sept. 1864
62	James H. Smith	Private	J	1st Regt. Cal.	Sept. 1864	Cholera	Sept. 1864
63	William H. Smith	Private	K	1st Regt. Cal.	Sept. 1864	Cholera	Sept. 1864
64	George H. Smith	Private	L	1st Regt. Cal.	Sept. 1864	Cholera	Sept. 1864
65	Thomas H. Smith	Private	M	1st Regt. Cal.	Sept. 1864	Cholera	Sept. 1864
66	Charles H. Smith	Private	N	1st Regt. Cal.	Sept. 1864	Cholera	Sept. 1864
67	Edward H. Smith	Private	O	1st Regt. Cal.	Sept. 1864	Cholera	Sept. 1864
68	Frederick H. Smith	Private	P	1st Regt. Cal.	Sept. 1864	Cholera	Sept. 1864
69	Robert H. Smith	Private	Q	1st Regt. Cal.	Sept. 1864	Cholera	Sept. 1864
70	Henry H. Smith	Private	R	1st Regt. Cal.	Sept. 1864	Cholera	Sept. 1864
71	John H. Smith	Private	S	1st Regt. Cal.	Sept. 1864	Cholera	Sept. 1864
72	James H. Smith	Private	T	1st Regt. Cal.	Sept. 1864	Cholera	Sept. 1864
73	William H. Smith	Private	U	1st Regt. Cal.	Sept. 1864	Cholera	Sept. 1864
74	George H. Smith	Private	V	1st Regt. Cal.	Sept. 1864	Cholera	Sept. 1864
75	Thomas H. Smith	Private	W	1st Regt. Cal.	Sept. 1864	Cholera	Sept. 1864
76	Charles H. Smith	Private	X	1st Regt. Cal.	Sept. 1864	Cholera	Sept. 1864
77	Edward H. Smith	Private	Y	1st Regt. Cal.	Sept. 1864	Cholera	Sept. 1864
78	Frederick H. Smith	Private	Z	1st Regt. Cal.	Sept. 1864	Cholera	Sept. 1864
79	Robert H. Smith	Private	A	1st Regt. Cal.	Sept. 1864	Cholera	Sept. 1864
80	Henry H. Smith	Private	B	1st Regt. Cal.	Sept. 1864	Cholera	Sept. 1864
81	John H. Smith	Private	C	1st Regt. Cal.	Sept. 1864	Cholera	Sept. 1864
82	James H. Smith	Private	D	1st Regt. Cal.	Sept. 1864	Cholera	Sept. 1864
83	William H. Smith	Private	E	1st Regt. Cal.	Sept. 1864	Cholera	Sept. 1864
84	George H. Smith	Private	F	1st Regt. Cal.	Sept. 1864	Cholera	Sept. 1864
85	Thomas H. Smith	Private	G	1st Regt. Cal.	Sept. 1864	Cholera	Sept. 1864
86	Charles H. Smith	Private	H	1st Regt. Cal.	Sept. 1864	Cholera	Sept. 1864
87	Edward H. Smith	Private	I	1st Regt. Cal.	Sept. 1864	Cholera	Sept. 1864
88	Frederick H. Smith	Private	J	1st Regt. Cal.	Sept. 1864	Cholera	Sept. 1864
89	Robert H. Smith	Private	K	1st Regt. Cal.	Sept. 1864	Cholera	Sept. 1864
90	Henry H. Smith	Private	L	1st Regt. Cal.	Sept. 1864	Cholera	Sept. 1864
91	John H. Smith	Private	M	1st Regt. Cal.	Sept. 1864	Cholera	Sept. 1864
92	James H. Smith	Private	N	1st Regt. Cal.	Sept. 1864	Cholera	Sept. 1864
93	William H. Smith	Private	O	1st Regt. Cal.	Sept. 1864	Cholera	Sept. 1864
94	George H. Smith	Private	P	1st Regt. Cal.	Sept. 1864	Cholera	Sept. 1864
95	Thomas H. Smith	Private	Q	1st Regt. Cal.	Sept. 1864	Cholera	Sept. 1864
96	Charles H. Smith	Private	R	1st Regt. Cal.	Sept. 1864	Cholera	Sept. 1864
97	Edward H. Smith	Private	S	1st Regt. Cal.	Sept. 1864	Cholera	Sept. 1864
98	Frederick H. Smith	Private	T	1st Regt. Cal.	Sept. 1864	Cholera	Sept. 1864
99	Robert H. Smith	Private	U	1st Regt. Cal.	Sept. 1864	Cholera	Sept. 1864
100	Henry H. Smith	Private	V	1st Regt. Cal.	Sept. 1864	Cholera	Sept. 1864

307

Register of Prisoners of War received at Military Prison, Louisville, Ky.

No.	NAME	RANK	CO.	REMARKS	DISEASED		REMARKS
					Time	Place	
1	John H. Smith	Private	A	1st Regt. Cal.	Sept. 1864	Cholera	Sept. 1864
2	James H. Smith	Private	B	1st Regt. Cal.	Sept. 1864	Cholera	Sept. 1864
3	William H. Smith	Private	C	1st Regt. Cal.	Sept. 1864	Cholera	Sept. 1864
4	George H. Smith	Private	D	1st Regt. Cal.	Sept. 1864	Cholera	Sept. 1864
5	Thomas H. Smith	Private	E	1st Regt. Cal.	Sept. 1864	Cholera	Sept. 1864
6	Charles H. Smith	Private	F	1st Regt. Cal.	Sept. 1864	Cholera	Sept. 1864
7	Edward H. Smith	Private	G	1st Regt. Cal.	Sept. 1864	Cholera	Sept. 1864
8	Frederick H. Smith	Private	H	1st Regt. Cal.	Sept. 1864	Cholera	Sept. 1864
9	Robert H. Smith	Private	I	1st Regt. Cal.	Sept. 1864	Cholera	Sept. 1864
10	Henry H. Smith	Private	J	1st Regt. Cal.	Sept. 1864	Cholera	Sept. 1864
11	John H. Smith	Private	K	1st Regt. Cal.	Sept. 1864	Cholera	Sept. 1864
12	James H. Smith	Private	L	1st Regt. Cal.	Sept. 1864	Cholera	Sept. 1864
13	William H. Smith	Private	M	1st Regt. Cal.	Sept. 1864	Cholera	Sept. 1864
14	George H. Smith	Private	N	1st Regt. Cal.	Sept. 1864	Cholera	Sept. 1864
15	Thomas H. Smith	Private	O	1st Regt. Cal.	Sept. 1864	Cholera	Sept. 1864
16	Charles H. Smith	Private	P	1st Regt. Cal.	Sept. 1864	Cholera	Sept. 1864
17	Edward H. Smith	Private	Q	1st Regt. Cal.	Sept. 1864	Cholera	Sept. 1864
18	Frederick H. Smith	Private	R	1st Regt. Cal.	Sept. 1864	Cholera	Sept. 1864
19	Robert H. Smith	Private	S	1st Regt. Cal.	Sept. 1864	Cholera	Sept. 1864
20	Henry H. Smith	Private	T	1st Regt. Cal.	Sept. 1864	Cholera	Sept. 1864
21	John H. Smith	Private	U	1st Regt. Cal.	Sept. 1864	Cholera	Sept. 1864
22	James H. Smith	Private	V	1st Regt. Cal.	Sept. 1864	Cholera	Sept. 1864
23	William H. Smith	Private	W	1st Regt. Cal.	Sept. 1864	Cholera	Sept. 1864
24	George H. Smith	Private	X	1st Regt. Cal.	Sept. 1864	Cholera	Sept. 1864
25	Thomas H. Smith	Private	Y	1st Regt. Cal.	Sept. 1864	Cholera	Sept. 1864
26	Charles H. Smith	Private	Z	1st Regt. Cal.	Sept. 1864	Cholera	Sept. 1864
27	Edward H. Smith	Private	A	1st Regt. Cal.	Sept. 1864	Cholera	Sept. 1864
28	Frederick H. Smith	Private	B	1st Regt. Cal.	Sept. 1864	Cholera	Sept. 1864
29	Robert H. Smith	Private	C	1st Regt. Cal.	Sept. 1864	Cholera	Sept. 1864
30	Henry H. Smith	Private	D	1st Regt. Cal.	Sept. 1864	Cholera	Sept. 1864
31	John H. Smith	Private	E	1st Regt. Cal.	Sept. 1864	Cholera	Sept. 1864
32	James H. Smith	Private	F	1st Regt. Cal.	Sept. 1864	Cholera	Sept. 1864
33	William H. Smith	Private	G	1st Regt. Cal.	Sept. 1864	Cholera	Sept. 1864
34	George H. Smith	Private	H	1st Regt. Cal.	Sept. 1864	Cholera	Sept. 1864
35	Thomas H. Smith	Private	I	1st Regt. Cal.	Sept. 1864	Cholera	Sept. 1864
36	Charles H. Smith	Private	J	1st Regt. Cal.	Sept. 1864	Cholera	Sept. 1864
37	Edward H. Smith	Private	K	1st Regt. Cal.	Sept. 1864	Cholera	Sept. 1864
38	Frederick H. Smith	Private	L	1st Regt. Cal.	Sept. 1864	Cholera	Sept. 1864
39	Robert H. Smith	Private	M	1st Regt. Cal.	Sept. 1864	Cholera	Sept. 1864
40	Henry H. Smith	Private	N	1st Regt. Cal.	Sept. 1864	Cholera	Sept. 1864
41	John H. Smith	Private	O	1st Regt. Cal.	Sept. 1864	Cholera	Sept. 1864
42	James H. Smith	Private	P	1st Regt. Cal.	Sept. 1864	Cholera	Sept. 1864
43	William H. Smith	Private	Q	1st Regt. Cal.	Sept. 1864	Cholera	Sept. 1864
44	George H. Smith	Private	R	1st Regt. Cal.	Sept. 1864	Cholera	Sept. 1864
45	Thomas H. Smith	Private	S	1st Regt. Cal.	Sept. 1864	Cholera	Sept. 1864
46	Charles H. Smith	Private	T	1st Regt. Cal.	Sept. 1864	Cholera	Sept. 1864
47	Edward H. Smith	Private	U	1st Regt. Cal.	Sept. 1864	Cholera	Sept. 1864
48	Frederick H. Smith	Private	V	1st Regt. Cal.	Sept. 1864	Cholera	Sept. 1864
49	Robert H. Smith	Private	W	1st Regt. Cal.	Sept. 1864	Cholera	Sept. 1864
50	Henry H. Smith	Private	X	1st Regt. Cal.	Sept. 1864	Cholera	Sept. 1864
51	John H. Smith	Private	Y	1st Regt. Cal.	Sept. 1864	Cholera	Sept. 1864
52	James H. Smith	Private	Z	1st Regt. Cal.	Sept. 1864	Cholera	Sept. 1864
53	William H. Smith	Private	A	1st Regt. Cal.	Sept. 1864	Cholera	Sept. 1864
54	George H. Smith	Private	B	1st Regt. Cal.	Sept. 1864	Cholera	Sept. 1864
55	Thomas H. Smith	Private	C	1st Regt. Cal.	Sept. 1864	Cholera	Sept. 1864
56	Charles H. Smith	Private	D	1st Regt. Cal.	Sept. 1864	Cholera	Sept. 1864
57	Edward H. Smith	Private	E	1st Regt. Cal.	Sept. 1864	Cholera	Sept. 1864
58							

Private Daniel C. Paul, Company I, 4<sup>th</sup> Regiment Tennessee Cavalry

Name appears on a roll of Prisoners of War at Military Prison, Louisville, Kentucky

Date when received-September 14, 1864

Where captured-Near Woodbury, Tennessee

Date when captured-September 6, 1864

Date when discharged-September 15, 1864

Where sent-Camp Chase

Remarks, charges, &c.:

Nashville, Tennessee

Louisville, Kentucky, Register No. 7, page 491

Private Daniel C. Paul, Company I, 4<sup>th</sup> Regiment Tennessee Cavalry

Name appears on a Roll of Prisoners of War forwarded from Military Prison, Louisville, Kentucky to Camp Chase, Ohio, September 15, 1864

Roll dated: Louisville, Kentucky September 15, 1864

Where captured-Near Woodbury, Tennessee

When captured-September 6, 1864

Remarks:

Number of roll:499 sheet 4

Private Daniel C. Paul, Company I, 4<sup>th</sup> Regiment Tennessee Cavalry

Name appears on a Roll of Prisoners of War received at Camp Chase, Ohio, from September 16 to 20, 1864

Roll dated.....,186

Where captured-Near Woodbury, Tennessee

When captured-September 6, 1964

Remarks:

Received from Louisville, Kentucky September 17, 1864

Number of roll 88

Private Daniel C. Paul, Company I, 4<sup>th</sup> Regiment Tennessee Cavalry

Name appears as a signature to a Roll of Prisoners of War paroled at Camp Chase, Ohio, February 12, 1865

Roll dated Headquarters Camp Chase, Ohio, February 12, 1865

Where captured-Near Woodbury, Tennessee

When captured-September 6, 1864

Remarks:

Entry cancelled name appears of column of names only

Roll No. 7 Point lookout, Maryland bears the following indorsement which also supplies to the men whose names are borne on this roll: "Received at Boulwares & Cox wharf, James River, February 20 and 21<sup>st</sup>, 1865 from Lt. Colonel Jno. E. Mulford, U.S. Asst. Agent for Exchange Three Thousand and Thirty-eight (3038) paroled Confederate prisoners of war on this roll, including officers.

Re. Ould, Agent of Exchange

Number of Roll 144, sheet 14

Private Daniel C. Paul, Company I, 4<sup>th</sup> Regiment Tennessee Cavalry

Name appears on list of Prisoners of War transferred from Louisville, Kentucky to Camp Chase, Ohio

Sheet 284

284

NO.	NAME	RANK	REGIMENT, OR COUNTY AND STATE	CO.	WHERE CAPTURED	WHEN CAPTURED	REMARKS FOR EXCHANGE		WHEN EXCHANGED	REMARKS
							Wants	Wants		
1105	Blount	Sgt. S.	24 Ky. Cav.	A	Lynchburg Ky.	June 12, 1864				Transf. to Camp Chase Aug. 12, 64
6	Bell	Sgt. S.	1 " "	B	Mass.	" "				" "
7	Bell	Sgt. S.	29 Tenn. Inf.	K	near Atlanta	Aug. 5, "				Transf. to Camp Chase Aug. 12, 1864
8	Bell	Sgt. M.	1st Tenn. Cav.	"	"	July 26, "				" "
9	Bell	Sgt. S.	1st Tenn. Cav.	"	"	July 26, "				" "
1110	Bell	Sgt. S.	5th Ky. Cav.	E	Grant Co. Ky.	" 15, "				Transf. to Camp Chase August 12, 64
1	Bell	Sgt. S.	40 Ga. Inf.	A	near Atlanta	Aug. 13, "				Transf. to Camp Chase Sep. 5, 64
2	Bell	Sgt. S.	1 " "	A	"	" "				" "
3	Bell	Sgt. S.	1 La. "	C	Salmonville	" 16, "				" "
4	Bell	Sgt. S.	34 Mass.	D	near Atlanta	" 17, "				" "
5	Bell	Sgt. S.	12 Tenn. Cav.	B	Roseville	" 24, "				" "
6	Bell	Sgt. S.	24 Ala. Inf.	E	near Atlanta	" 13, "				" "
7	Bell	Sgt. S.	" "	K	"	" "				" "
8	Bell	Sgt. S.	" "	K	Cartersville	" 16, "				" "
9	Bell	Sgt. S.	43 Ga. Inf.	A	Atlanta	" 17, "				" "
1120	Bell	Sgt. S.	2 Ala. Cav.	A	"	" 11, "				" "
1	Bell	Sgt. S.	9 Texas "	E	Lawrence	" 20, "				" "
2	Bell	Sgt. S.	1st Tenn. Cav.	"	"	" 2, "				" "
3	Bell	Sgt. S.	1st Tenn. Cav.	"	Atlanta	" 2, "				" "
4	Bell	Sgt. S.	3 Texas "	H	Lawrence	" 19, "				" "
5	Bell	Sgt. S.	3 Ky. "	A	Cynthiana Ky.	June 11, "				" "
6	Bell	Sgt. S.	51 Ala. "	B	near Franklin Tenn.	Sept. 2, "				Sept. 10, 64
7	Bell	Sgt. S.	" "	E	"	" "				" "
8	Bell	Sgt. S.	8 Conf. "	"	"	" "				" "
9	Bell	Sgt. S.	33 Miss. Inf.	D	Atlanta	July 20, "				" "
1130	Bell	Sgt. S.	1 Conf. Cav.	A	Lawrence	Sept. 4, "				" "
1	Bell	Sgt. S.	9 Texas "	C	Lawrence	" "				" "
2	Bell	Sgt. S.	2 Ky. "	C	Cynthiana Ky.	June 12, "				Sept. 15, 64
3	Bell	Sgt. S.	3 " "	D	Champion Hill Miss.	May 1, 63				" "
4	Bell	Sgt. S.	2 " "	A	26 mi. N.W. of Ch.	Sept. 6, 64				" "
5	Bell	Sgt. S.	1st Tenn. Cav.	"	"	" "				" "
6	Bell	Sgt. S.	5 Ga. Cav.	H	near Lawrence	" "				Transf. to Camp Chase Sept. 10, 64
7	Bell	Sgt. S.	1 " "	"	"	" "				" "
8	Bell	Sgt. S.	11 Tenn. "	D	"	" "				" "
9	Bell	Sgt. S.	8 " "	"	"	" "				" "
1140	Bell	Sgt. S.	4 " "	"	"	" "				" "
1	Bell	Sgt. S.	8 " "	"	"	" "				" "
2	Bell	Sgt. S.	2 Ky. Bn.	B	near Lawrence	" 8, "				" "
3	Bell	Sgt. S.	" "	"	"	" "				" "
4	Bell	Sgt. S.	" "	"	"	" "				" "
5	Bell	Sgt. S.	" "	"	"	" "				" "

REMARKS FOR EXCHANGE		WHEN EXCHANGED	REMARKS
Wants	Wants		
			Transf. to Camp Chase Aug. 12, 64
			" "
			Transf. to Camp Chase Aug. 12, 1864
			" "
			" "
			Aug. 25-64 / 10 months
			Transf. to Camp Chase August 31, 64
			Transf. to Camp Chase Sep. 5, 64
			" "
			" "
			" "
			" "
			" "
			" "
			" "
			" "
			" "
			" "
			" "
			" "
			" "
			" "
			" "
			" "
			" "
			" "
			" "
			" "
			" "
			" "
			" "
			" "
			" "
			" "
			" "
			" "
			" "
			" "
			" "
			" "
			" "
			" "
			" "
			" "
			" "
			" "
			" "
			" "
			" "
			" "
			" "
			" "
			" "
			" "
			" "
			" "
			" "
			" "
			" "
			" "
			" "
			" "
			" "
			" "
			" "
			" "
			" "
			" "
			" "
			" "
			" "
			" "
			" "
			" "
			" "
			" "
			" "
			" "
			" "
			" "
			" "
			" "
			" "
			" "
			" "
			" "
			" "
			" "
			" "
			" "
			" "
			" "
			" "
			" "
			" "
			" "
			" "
			" "
			" "
			" "
			" "
			" "
			" "
			" "
			" "
			" "
			" "
			" "
			" "
			" "
			" "
			" "
			" "
			" "
			" "
			" "
			" "
			" "
			" "
			" "
			" "
			" "
			" "
			" "
			" "
			" "
			" "
			" "
			" "
			" "
			" "
			" "
			" "

Private Daniel C. Paul, Company I, 4<sup>th</sup> Regiment Tennessee Cavalry

Name appears as signature to an Oath of Allegiance to the United States, subscribed and sworn to at Camp Chase, Ohio, May 11, 1865

Place of residence-Sparta, White County, Tennessee

Complexion-Florid

Hair-Dark

Eyes-Dark

Hair-Dark

Height-5 feet 8 inches

Where captured-Woodbury, Tennessee

When captured-September 6, 1864

Remarks:

Signed by mark

\*Indorsement shows:" Roll of Prisoners of War released at Camp Chase, Ohio, (as per General Order No. 86 and dated May 5, 1865

Number of Roll 167

Letter of information of the A. G. O.

A. G. O. 10 Street

May 10, 09

Mr. Whitcomb:

Cards from Roll 1 & Roll 13, sheet 18

1865. Record of Prisoners of War & Citizens released					from Confinement at Camp Chase, Ohio. (Continued)				
Date	Name	Rank	Regt or Co	Co	Conditions of Release	By whom	date	By whom	date
May 11/65	Rocke, J. A.	30	La. Inf	2	Path of Allegiance U.S.	Gov	May 8/65		
"	" Martin, J. E. & Co.	"	4 Ky. Cav	6	"	"	"	"	"
"	" Ray, A. H.	"	63 Ia. Inf	9	"	"	"	"	"
"	" Rock, M. B.	"	18 Miss Cavalry	1	"	"	"	"	"
"	" Rice, James C.	"	47 Penn. Drift.	1	"	"	"	"	"
"	" Rice, W. L.	"	"	"	"	"	"	"	"
"	" Schindler, M. H.	"	30 Ia.	"	"	"	"	"	"
"	" O'Brien, John W.	"	5 Tenn	"	"	"	"	"	"
"	" Williams, J. M.	"	4 Ia. Cav	"	"	"	"	"	"
"	" George, J. P.	"	9 "	"	"	"	"	"	"
"	" Williams, John H.	"	1 "	"	"	"	"	"	"
"	" Paul, Daniel C.	"	4 "	"	"	"	"	"	"
"	" White, Solomon	"	8 "	"	"	"	"	"	"
"	" Scott, E. J. D.	"	21 "	"	"	"	"	"	"
"	" Smith, David S.	"	1 " Drift.	"	"	"	"	"	"
"	" Whitlatch, Marcus D.	"	8 "	"	"	"	"	"	"
"	" Buchanan, W. M. O.	"	41 "	"	"	"	"	"	"
"	" Childs, John	"	Drift. Scouts	"	"	"	"	"	"
"	" McDonald, W. J.	"	116 Ia. Drift	"	"	"	"	"	"
"	" Smith, John S. G.	"	24 Miss	"	"	"	"	"	"
"	" Hampton, John	"	11 Penn. Cav	"	"	"	"	"	"
"	" Weber, W. H.	"	15 " Drift	"	"	"	"	"	"
"	" White, John W.	"	2 " Cav	"	"	"	"	"	"
"	" Bryant, W. C.	"	25 Penn	"	"	"	"	"	"
"	" Brown, W. C.	"	8 "	"	"	"	"	"	"
"	" Carpenter, David A.	"	8 "	"	"	"	"	"	"
"	" Miller, W. J.	"	8 "	"	"	"	"	"	"

Camp Butler, Illinois shows D. C. Paul Private Company F, Meyers Regiment Tennessee Cavalry captured Murfreesboro, Tennessee January 5/63

Seems to have been received from Louisville, Kentucky March 14, 1863.

Should be cards for that place. We fail to locate him

Respectfully

O.B. Brown

Mr. Brown

Carded Register No. 1 of Louisville, Kentucky shows above as Daniel C. Paul Sergeant Bledsoe's Company, Murray's Cavalry

Carded Roll 218 of Louisville shows as Daniel C. Paul Sergeant Bledsoe's Company Murray's Tennessee Cavalry, same capture &c.

May 19, 09 R. W. P

End of File

## *Family History*

Wednesday May 1, 1839

Daniel C. Paul was born to the parents of Gorge McKnight and Barbary Ellen Walker Paul of Morgan County, Tennessee Subdivision No. 19

Sunday April 29, 1849

Mrs. Louisa A. Paul Hale was born in Overton County, Tennessee parents unknown

1850 (Daniel C. Paul)

Residing with his immediate family in the 19<sup>th</sup> subdivision of Morgan County, Tennessee

Gorge	54	Farmer	Net worth in Real Estate \$500.00
-------	----	--------	-----------------------------------

Barbary	47	Domestic	
---------	----	----------	--

Walter	16		
--------	----	--	--

Timothy	16		
---------	----	--	--

Katherine	13		
-----------	----	--	--

Dan C.	11		
--------	----	--	--

Margaret J.	9		
-------------	---	--	--

Martin S.	4		
-----------	---	--	--

1860

Residing in the 2<sup>nd</sup> Civil District of Fentress County, Tennessee with Mary A. Rain's family

Jamestown Post office



Mary A.	29	Farmer
Albin C.	9	
Henry Clay	6	
Clarinda	3	
Dan C. Paul	25	Day Laborer

Tuesday October 1, 1861

Age-22

Enlisted at Camp Meyers, Tennessee and mustered August 10, 1861

By 1<sup>st</sup> Lieutenant A. B. Hardcastle for 12 months

Valuation of horse 160.00

Wednesday October 8, 1862

Wounded and captured at the Battle Perryville, Kentucky by Federal forces, he was sent to Louisville, Kentucky then forwarded to Camp Butler, Illinois. Escaped from Camp Butler, Illinois.

Monday January 5, 1863

Recaptured near Murfreesboro, Tennessee and returned to Camp Butler until exchanged (date of exchange unknown)

Tuesday September 6, 1864

Private Daniel C. Paul was taken as a Prisoner of War, for the third time near, Woodbury, Tennessee, by Federal forces under the command of Major General Thomas. He was forwarded to Camp Chase, Ohio for the duration of the war.

Sunday February 12, 1865

Private Daniel Paul was, given a parole while at Camp Chase, Ohio

Thursday May 11, 1865

Private Daniel C. Paul was, released, from Camp Chase after taking the Oath of Allegiance to the United States Government.

1870

No records found in Census

1880

Residing in the 2<sup>nd</sup> Precinct of Wise County, Texas

Dan C.	41	Farmer
Louisa	31	Domestic
Millie E.	11	
Robert T.	8	
Josaphine	6	
Preston E.	4	
Luemer	2	
I. D.	3 months	

Sunday September 8, 1889

George C. Paul died at the age of fifty years of age and was interned in the Pella Cemetery located in Wise County, Texas.

Plot No. 2S,6,145



1890

No census information due to fire

Wednesday July 27, 1892

Mrs. Louisa A. Paul (widow) remarried to Mr. John Slinkard Hale in Wise County, Texas

1900 (Louisa A. Paul Hale)

Residing in Justice Precinct No. 4 Wise County, Texas

John A.	72	Farmer
Louisa	51	Domestic
Julia T.	20	
Festes C.	16	
Clarisse	14	
Leroy	11	

Tuesday April 29, 1902

Mr. John Slinkard Hale second husband to Louisa died at the age of seventy-four years of age and was interned in the cottonwood Cemetery located in Wise County, Texas



Cottonwood Cemetery - Wise County, Texas  
Photo: 23 Sep 2009 - Arthur Allen Moore III

1910

No census information found

Monday March 19, 1918

Confederate soldier Widow's Pension Application No. 35042

Mrs. Louisa A. Paul/ Hale

Accepted Monday April 1, 1918

012  
4-1-18

35042

Form B.  
*Head*

WIDOW'S APPLICATION  
FOR A PENSION

The Commissioner of Pensions reserves the  
right to call for additional testimony if he deems  
it necessary.

Name of Applicant.  
*Mrs. J. A. Hale*

*Hale* county.

Postoffice *North Leno NY*

Filed *3-22-18*

Approved *3-30-18*

Pension allowed from *3-1-18*

Rejected

*J. C. Jones*  
Commissioner of Pensions.

U. S. GOVERNMENT PRINTING OFFICE

## For Use of Widows of Soldiers who are in Indigent Circumstances

## THE STATE OF TEXAS

COUNTY OF Miss

I, Mrs. J. S. Hale do hereby make application to the Commissioner of Pensions for a pension, to be granted me under the Act passed by the Thirty-third Legislature of the State of Texas, and approved April 7, A. D. 1913, on the following grounds:

I am the widow of John S. Hale deceased, who departed this life on the 27 day of April, A. D. 1902, in the county of Miss in the State of Texas

I have not remarried since the death of my said husband, and I do solemnly swear that I was never divorced from my said husband, and that I never voluntarily abandoned him during his life, but remained his true, faithful and lawful wife up to the date of his death. I was married to him on the 28 day of July, A. D. 1894, in the county of Miss, in the State of Texas.

My husband, the said John S. Hale, enlisted and served in the military service of the Confederate States during the war between the States of the United States, and that he did not desert the Confederate service. I have been a resident of the State of Texas since prior to January 1, A. D. 1900, and have been continuously since a citizen of the State of Texas. I do further state that I do not receive from any source whatever money or other means of support amounting in value to the sum of \$300.00 per annum, nor do I own in my own right, nor does any one hold in trust for my benefit or use, estate or property, either real, personal or mixed, either in fee or for life, of the value of one thousand dollars, exclusive of the home of the value of not over \$1000; nor do I receive any aid or pension from any other State, or from the United States, or from any other source, and I do further state that the answers given to the following questions are true:

1. What is your age? 69 years old
2. Where were you born? Shurton County Tenn
3. How long have you resided in the State of Texas? 49 years
4. How long have you resided in the county of your present residence. And what is your postoffice address? lived in Miss County 49 years P.O. address Slooth house
5. Did your husband draw a pension? If so, give his file number. did not draw one
6. What was your husband's full name? John S. Hale
7. What was the date of his death? 27 April, 1902
8. In what State was your husband's command originally organized? Miss
9. How long did your husband serve? If known, to you give date of enlistment and discharge. about 3 years. see oath of allegiance dated June 8th 1965
10. What was the name or letter of the company, or number of the battalion, regiment or battery of artillery in which your husband served? If he was transferred from one branch of service to another, give time of transfer, description of command and time of service. 16th Reg. of Miss. if he was transferred I do not know (see dock matery oath of allegiance trans attached)
11. Name branch of service in which your husband served, whether infantry, cavalry, artillery, or the navy, or if commissioned as an officer by the President, his rank and line of duty, or if detailed for special service, under the law of conscription, the nature of such service, and time of service. Miss infantry do not know if he was transferred
12. Have you transferred to others any property of any kind for the purpose of becoming a beneficiary under this law? I have not

Wherefore your petitioner prays that her application for a pension may be approved and such other proceedings be had in the premises as are required by law.

(Signature of Applicant) Miss J. S. Hale (TX)

Sworn to and subscribed before me this 19th day of March, A. D. 1918

[Seal]

County Judge Miss County, Texas.

35042



### AFFIDAVIT OF WITNESSES

[Note.—There must be at least two creditable witnesses.]

THE STATE OF TEXAS }

County of Wise

Before me, J. H. Hacker, County Judge of Wise County,  
State of Texas, on this day personally appeared J. B. Duff & E. D. Setser, who are personally  
known to me to be creditable citizens, who, being by me duly sworn, on oath state that they personally know that  
Mrs. J. S. Hale, applicant for a pension as the widow of John S. Hale  
deceased, is in truth and fact the widow of John S. Hale deceased; that they personally  
know that she has not remarried since the death of her husband, for whose service in the army she claims a pension,  
and that they have no interest in this claim.

(Signature of Witness) J. B. Duff

(Signature of Witness) E. D. Setser

Sworn to and subscribed before me, this 19th day of March, A. D. 1918

[Seal.]

J. H. Hacker  
County Judge Wise County, Texas.

### AFFIDAVIT OF WITNESSES

[Note.—There must be at least two creditable witnesses.]

THE STATE OF TEXAS }

County of Wise

Before me, J. H. Hacker, County Judge of Wise County,  
State of Texas, on this day personally appeared J. B. Duff & E. D. Setser, who are personally  
known to me to be creditable citizens, who, being by me duly sworn, on oath state that they personally know the  
above named applicant for pension, and that they personally know that the said Miss J. S. Hale  
has been a bona fide resident citizen of the State of Texas since prior to January 1, A. D. 1900, and that they have  
no interest in this claim.

(Signature of Witness) J. B. Duff

(Signature of Witness) E. D. Setser

Sworn to and subscribed before me, this 19th day of March, A. D. 1918

[Seal.]

J. H. Hacker  
County Judge Wise County, Texas.



# AFFIDAVIT OF WITNESSES

(If possible, the two witnesses should have served with the applicant's husband in the army, and if so, let them, or either of them, state it in their oath; also any information regarding the army service of applicant's husband.)

THE STATE OF TEXAS }

County of Wise  
Before me, J. M. Walker, County Judge of Wise County,

State of Texas, on this day personally appeared J. B. Duff, who personally known to me to be creditable citizens, who, being by me sworn, on oath state that they are personally acquainted with the foregoing applicant, and that the facts set forth and statements made in her application are correct and true, to the best of their knowledge and belief, and that they have no interest in this claim. And further make oath to the following facts touching the service of applicant's husband in the Confederate Army: (State fully your source of knowledge)

My name is J. B. Duff. I was a confederate soldier in the time of the war between the States. I did not serve in the same command with John S. Hale. But I know of my own knowledge he did serve in Comp. E, 16th mo Duff about 3 years. he was a good brave soldier

Will send hereinto attached documentary Proff. of service see exhibit (a) (b)

(Signature of Witness) J. B. Duff

(Signature of Witness) \_\_\_\_\_

Sworn to and subscribed before me, this 16th day of March A. D. 1918

[Seal.]

This claim is  
Just. J. M. Walker  
County Judge

Wise County, Texas.

## CERTIFICATE OF STATE AND COUNTY ASSESSOR

I, J. C. Casey State and County Assessor in the County of Wise TX  
State of Texas, do certify that Mrs. L. A. Hale whose name is signed to the foregoing application for a pension, under the Act of the Thirty-third Legislature, approved April 7, 1913, is charged on the tax rolls of said county with a homestead of the value of \$500 hundreds Dollars, and of other property, real or personal, or both, of the value of \$2.00 Two (\$2.00) total Dollars.

Given under my hand, this 20th day of March A. D. 1918

J. C. Casey  
State and County Assessor.

35042



J. C. JONES, Commissioner

OFFICE OF  
COMMISSIONER OF PENSIONS  
STATE OF TEXAS  
AUSTIN

2632-516-3M

To the Adjutant General,

War Department,

Washington, D. C.

Dear Sir:

I have the honor to request the military record of John S. Stale who is  
reported to have enlisted in Company E, Regiment 16 Regt. Mo.

Inf.

in service in the Confederate States Army.

Purpose: The widow person above named is an applicant for a Confederate pension granted  
by the State, and I desire to verify his proof of service.

Very respectfully,



J. C. Jones

Commissioner of Pensions.

35042

Exhibit (a)

No. 22

Shreveport La JUNE 8<sup>th</sup> 1865.

John B. Hale Priv of E. Company 16<sup>th</sup>  
Regiment M<sup>o</sup> Infy Trans Mip Dept C. S. A., residing in  
McDonald County Missouri

..... having been, with the approval of  
the proper authorities, paroled, is permitted to return to his home, not to be disturbed by the United States Authorities, so long  
as he observes his parole and the laws in force where he may reside.

By order of

MAJOR GENERAL E. R. S. CANBY, U. S. A.



GEO. L. ANDREWS,

Brig. Gen. and Provost Marshal General.

35042



82X254  
70254

WAR DEPARTMENT,

THE ADJUTANT GENERAL'S OFFICE,

WASHINGTON, March 26, 1918.

Respectfully returned to the Com  
missioner of Prisons  
State of Texas  
Austin,

with the information that the name  
John S. Kale has not  
been found on the rolls of Co. E,  
16th Regt. Mo. Inf. C. S. A. on  
file papers between Jan 19, 1865 to Feb  
29, 65. Other records show that  
John S. Kale, 1st Lt., Co. E, 16th  
Regt. Mo. Inf. was admitted to C. S. A.  
General Hospital, Shreveport, La., April  
15, 1865, and returned to duty April 20, 65.  
Union Prisoner of War record  
shows that he was paroled at  
Shreveport, La., June 8, 1865.

H. J. McLean

The Adjutant General.

S Form No. 100-2-A. G. O.  
Ed Sept. 30-16-15,000

Oath of Allegiance.



Rolla Mo

Exhibit (B)

## OATH OF ALLEGIANCE.

I, John S. Hale of McDonald County,  
State of MISSOURI, do hereby solemnly swear that I will bear true Allegiance to the United  
States, and support and sustain the Constitution and laws thereof; that I will maintain the National Sovereignty paramount  
to that of all State, County or Confederate powers; that I will discourage, discountenance, and forever oppose secession, rebellion and  
the disintegration of the Federal Union; that I disclaim and denounce all faith and fellowship with the so-called Confederate Armies,  
and pledge my honor, my property, and my life, to the sacred performance of this my solemn Oath of Allegiance to the  
Government of the United States of America.

John S. Hale

Subscribed and sworn to before me this  
22<sup>d</sup> day of June, 1865,  
at St. Louis, Mo.

Geo. H. Richardson

Lieut. and Assistant Provost Marshal General.

### WITNESSES:

E. B. Thurber of  
Calhoun

### DESCRIPTION.

Age, 34  
Height, 5 ft. 8 in.  
Color of Eyes, Black  
Color of Hair, Black  
Characteristics,

TX

35042

Alvord, Texas August, 15th, 1921

Mrs. Frank Darlington,

City,

IN ACCOUNT WITH

## Alvord Mercantile Company

Furniture & Undertakers

Staple and Fancy Groceries

B. H. GRIFFITH, Buyer and Manager

JOHN DABNEY, President

W. M. O'NEAL, Buyer and Manager

Funeral expense of (Mrs. L.A. Hale)

Casket

150,00

Robe

12,50

Hearse

30,00

Lumber

2,50

Br. Hose

1,25

Phone Calls

3,05

\$199,30



35042



3-30-1918

## MORTUARY WARRANT ACCOUNT

Alvord Texas, August 15th, 1921 19

STATE OF TEXAS

To Mrs. Alma Darlington Dr.

WRITE ADDRESS PLAINLY Alvord, Texas; RFD#4

Account of Death of Pensioner No. 35042, County Wise

Pensioner's Name in full Mrs. L. A. Hale

Account must be itemized, but Mortuary Warrant will not be issued for more than Thirty Dollars.

Account hereto attached ----- \$199.30



The above account for One hundred ninety nine &amp; 30/100 ----- Dollars

is just, due and unpaid.

Sworn to and subscribed before me this 15th day of August, 1921 19

Notary Public, Wise County, Texas

35042



## APPLICATION FOR MORTUARY WARRANT

STATE OF TEXAS,  
 County of Wise } I, (Mrs) Alma Darlington  
 do hereby certify that I am the person to whom is entrusted the paying of the accounts and indebtedness of  
 the late Mrs. L. A. Hale, who was a pensioner of the  
 State of Texas, and whose file number is 35042 and whose original county is Wise  
 The said pensioner Mrs. L. A. Hale, died on the  
4th day of August, 1921, in the town of Alvord  
 County of Wise, Texas.  
 The pensioner died in the home of (Mrs) Alma Darlington  
 who was related to the pensioner as daughter  
 That the warrant, which application is hereby made for, shall be applied to paying all or part of the ex-  
 penses incurred by the said pensioner. Mrs. L. A. Hale  
 I further certify that the warrant for the current quarter has not been cashed by the pensioner, to the  
 best of my knowledge and belief.  
 I am related to the pensioner as (Mrs) daughter  
 and that my home is in the town of Alvord, County of Wise  
 State of Texas, that my postoffice address is Alvord, Texas: RFD#4

Signed Mrs Alma Darlington

Before me, Wm. Covington, a Notary Public in and for the County  
 of Wise, State of Texas, personally appeared Mrs. Alma Darlington  
 who being by me duly sworn did certify to, and sign the foregoing statement.

(Seal of Office)

Notary Public in and for Wise, Texas.

## CERTIFICATE OF UNDERTAKER.

I, B. H. Euffield, do certify that I am undertaker in the  
 town of Alvord, County of Wise, State of Texas  
 that I had charge of the body of J. S. Hale, who died in the  
 town of Alvord, County of Wise, State of Texas  
 on the 4th day of August, 1921. That said body was prepared for burial by me  
 on the 4th day of August, 1921. That said body was buried in the  
Belle View Cemetery, which is located in the County of Wise  
 State of Texas, and that I am of the opinion that warrant herein applied for should be  
 issued to the said Alma Darlington, who makes the  
 foregoing application.

Signed B. H. Euffield Undertaker.

## CERTIFICATE OF PHYSICIAN.

I, D. M. Speer, do certify that I am a practicing  
 physician, and that I attended Mrs. L. A. Hale in his last illness, and  
 am of the opinion that his ailments were sterility

I further certify that I am of the opinion that the Mortuary Warrant above requested should be issued  
 in the name of the aforementioned applicant, in accordance with Act passed by the Thirty-fifth Legislature,  
 and approved March 2, 1917.

Signed D. M. Speer Physician.Physician's Address Alvord Texas





Residing in Justice Precinct No. 2 Wise County, Texas

Louisa            70        State Pensioner

Thursday August 4, 1921

Mrs. Louisa A. Paul Hale died at the age of seventy-two years and was interned in the Pella Cemetery located in Alvord, Wise County, Texas



## *Reference*

Ancestry.com-Census records, 1850, Census Place-Morgan, Tennessee, Roll No. M432\_891, Page No. 294B 1860, Census Place Fentress County, Tennessee Roll No. M653\_1249, Page No. 11, Census Place Wise, Texas, Roll No. 1333, page No. 130D, 1900 Census Place Wise , Texas Roll no. 1680, Page No. 8B1920, Census Place Wise, Texas Roll No. T629-1860 Page No. 95

Ancestry.com-Selected Records of the War Department Relating to Confederate Prisoners of War 1861-1865- M598-21, M598\_88, M598\_90, M598\_94

Ancestry.com-Rayburn Family –related to Daniel C. Paul

Ancestry.com-Texas Confederate Soldiers Widows Pension No. 35042

Findagrave-Daniel c. Paul Memorial No. 44280315, Created by Wise County, Texas, November 13, 2009, J. S. Hale Memorial No. 20676062 Created by William holly July 28, 2007 & Lou A. Hale Memorial No. 44280242 created by Wise County, Texas November 13, 2009

Fold3-Compiled military record for Company F, Fourth Regiment Tennessee Cavalry Murray's File Card No. 519 & Compiled military service record Company I, Eighth Regiment Tennessee Cavalry Smith's File cards No. 1194 & 1220

Wise County, Texas Marriage Dates for J.S. Hale and Mrs. Lou A. Paul Book 2 page 227

Researched and edited by

Theodore Urbanski

Stones River Publishing Inc.®

233 Willington Hill Rd.

Willington, Connecticut 06279

[tedsuedoghouse@charter.net](mailto:tedsuedoghouse@charter.net)



Tuesday, November 13, 2012